

CODE NUMBER

3366110

DESCRIPTION

Sloan® XLERATOR® Sensor-Operated Wall - Surface Hand Dryer
EHD-502-ECO, HEPA, 208/277V, Sloan® XLERATOR® Sensor-Operated Wall - Surface Hand Dryer.

DETAILS

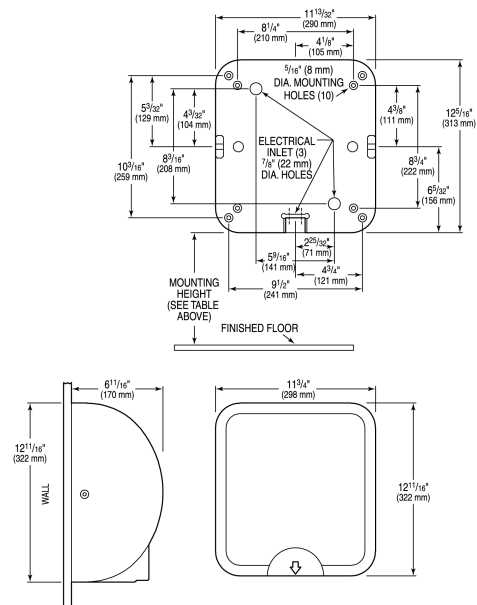
- Finish: Matte White (MW)
- Voltage: 208/277V ()
- Wattage: 50/60Hz ()
- Amperage: 2.0-2.2 ()
- Mounting: Wall - Surface
- Power Type: Hardwired
- Depth: 12 86/125" (322mm)
- Height: 6 11/16" (170mm)
- Width: 11 3/4" (298mm)

FEATURES

- Automatically operates by means of an Infrared Optical Sensor with 35-second lockout feature, it activates a strong controlled air blast
- Residual moisture is evaporated with a warm stream of air up to 135°F/57°C
- One-piece heavy-duty rib reinforced die cast zinc alloy housing minimizes damage to dryer in abusive environments
- 95% cost savings vs. paper towels
- Can be easily positioned to comply with ADA requirements or for juvenile height
- Can install multiple units on one circuit
- Available in Polished White, Matte White, Polished Chrome, Brushed Nickel and Graphite
- Hygienic hand dryer solution
- 10 second dry time
- Virtually maintenance free
- Available with HEPA Filtration System proven to remove 99.97% of potentially present bacteria at 0.3 microns from the air

DOWNLOADS

- [Sloan XLERATOR and Sloan XLERATOR Eco Hand Dryer Instructions](#)
- [Additional Downloads](#)



COMPLIANCES & CERTIFICATIONS



(BAA Compliant, cUL Certified, EPD, HEPA, Proposition 65, UL Certified, WELL Building Standard)

RECOMMENDED SPECIFICATION

Sloan Xlerator Sensor Operated Hand Dryer. 208V/230V Matte White Finish.

NOTES

All information contained within this document subject to change without notice.